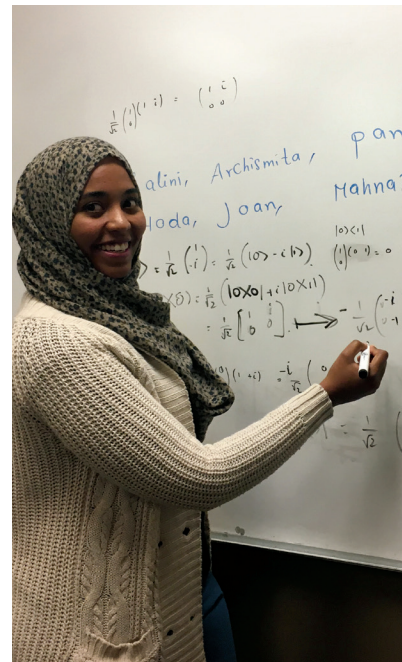


QUEEN ELIZABETH *Scholars*

INSPIRING FUTURES

Queen Elizabeth II
Diamond Jubilee
Scholarships-Advanced
Scholars Program





Principal Investigators, project leads and QES-AS funded researchers from Canada and 20 LMICs at a workshop organized by Universities Canada.

ACKNOWLEDGEMENTS

The Canadian Queen Elizabeth II Diamond Jubilee Scholarship Program (QES) is managed through a unique partnership of the Rideau Hall Foundation (RHF), Community Foundations of Canada (CFC), Universities Canada and Canadian universities.

The Advanced Scholars phase of the QES program (QES-AS) is funded by the International Development Research Centre (IDRC) and the Social Sciences and Humanities Research Council (SSHRC).



1. Guy Donald Abassombe, doctoral researcher from Cameroon, York University, deploying on foot to remote areas to hold training seminars in villages.
2. Camila Banales Seguel (right), doctoral researcher from Chile, York University, working with the local community around mapping waterways.
3. Nima Dorji (left), doctoral researcher from Bhutan, University of Victoria, and Victor Ramraj, Director of the University of Victoria's Centre for Asia Pacific Initiatives, presenting at a conference in Bhutan.
4. Carina Seitz (left), post-doctoral researcher from Argentina, University of Regina doing field work with Dr. Maria Vélez in Deep Lake, Saskatchewan.
5. Nehad Mabrouk, doctoral researcher from Sudan, University of Calgary.



TABLE OF CONTENTS

4 Executive summary

5 Introduction

5 Program overview

- 6 Program targets
 - 7 Program implementation model
-

9 Major areas of impact: Description and outcomes

- 9 Key outputs and outcomes
- 9 Global talent mobility and research placements
- 11 Partnerships and skills development
- 11 Global citizenship: Increasing knowledge and skills through the academic and professional experiences of young leaders
- 13 Strengthening research capacity of LMIC partner institutions
- 14 Knowledge transfer activities for LMIC partner institutions
- 14 Knowledge transfer activities with RPPs, LMIC scholars, Canadian universities and/or other community actors
- 14 Knowledge transfer impacts on individuals and institutions
- 16 Changes to organizational policies and practices

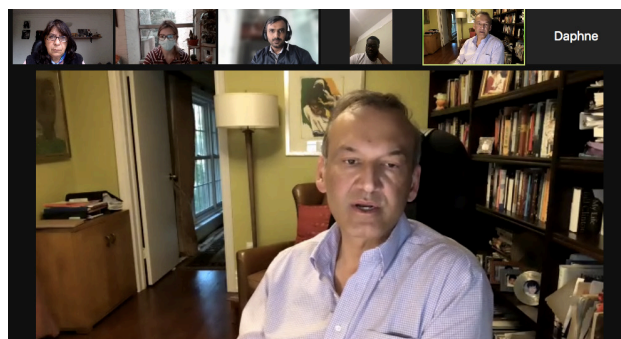
17 Lessons learned and recommendations

- 17 Considerations for future programming
-

18 Conclusion

19 Annexes

- 19 Annex 1: Focus areas of research
- 21 Annex 2: List of countries with numbers of scholars disaggregated by gender
- 23 Annex 3: LMIC partner institutions by country
- 27 Annex 4: LMIC partner institutions by Canadian university
- 31 Annex 5: Research placement partners by Canadian university
- 38 Annex 6: Research placement partners by country
- 45 Annex 7: Participating Canadian universities



Dr. Prabhat Jha, Director, Centre for Global Health Research, Research Placement Partner of the University of Toronto, working remotely with QES-AS researchers.

EXECUTIVE SUMMARY

The Canadian Queen Elizabeth II Diamond Jubilee Scholarship – Advanced Scholars (QES-AS) program is about global citizenship.

“Global Citizenship is about the shared human experience. It acknowledges and celebrates that, wherever we come from and wherever we live, we are here together. Our well-being and success are ultimately interdependent. We have more to learn from one another than to fear about our future.”

- World Economic Forum (WEF)

Through its international reach and research-focused programming, the QES-AS program has helped shape hundreds of global citizens equipped to find solutions to some of the complex global development problems.

From 2017 to 2021, the QES-AS program provided opportunities for Canadian universities to engage with partner institutions in low- and middle-income countries (LMICs) and to develop the next generation of community, research and academic leaders. It did so by offering promising scholars the chance to participate in international research mobility with invaluable training to help them grow as researchers, professionals and global citizens.

A total of 369 scholars from diverse backgrounds, genders and educational levels participated in the QES-AS program. The program exceeded its target of having at least 75% of participating scholars come from LMICs and achieved its target of supporting at least 50% female scholars. Scholars

ranged from early-career to doctoral and post-doctoral levels.

Participating scholars reported improvements in their leadership and teamwork skills, ability to conduct research and skills related to publishing and research communications, among other benefits. Despite the challenges brought about by the COVID-19 pandemic, over 87% of QES-AS scholars reported that they met or exceeded their learning goals.

The QES-AS program involved 21 Canadian universities, 109 LMIC institutions and 222 Research Placement Partners (RPPs). It was successful in forming new, global partnerships while strengthening existing ones. Of the 109 LMIC institutions, 52.7% were new partners for Canadian universities. Similarly, 73.4% of participating RPPs represented new collaborations and relationships. The impact of the QES-AS program on forming beneficial, global partnerships for Canadian universities and institutions is undeniable.

The QES-AS program also strengthened research capacities of LMIC institutions by encouraging knowledge transfer and global talent mobility involving applied research and specialized training. The program’s success was bolstered by the collaborative relationships developed between Canadian universities and their LMIC partners.



Left to right: Kwadwo Ameyaw Korsah, post-doctoral researcher from Ghana; Dr. Greta Cummings, previous Dean Faculty of Nursing, University of Alberta; Gladys Dzansi, post-doctoral researcher from Ghana; Dr. Solina Richter, previous Associate Dean, Global Nursing Office, University of Alberta.



QUEEN ELIZABETH II DIAMOND JUBILEE SCHOLARSHIP ADVANCED SCHOLARS' PROGRAM

INTRODUCTION

This report highlights key results and outcomes of the Queen Elizabeth II Diamond Jubilee Scholarship – Advanced Scholars (QES-AS) program. Implemented from 2017-2021, QES-AS aimed to identify and support scholars showing leadership potential and provide them with world-ready research experience through a Canadian university (see Annex 7), in collaboration with industry or a non-profit organization. The program also aimed to strengthen institutional capacities of Canadian universities' partners in LMICs and strengthen university linkages with industry, communities and international partners. QES-AS supported a network of Canadian and LMIC research leaders who are engaged in finding solutions to complex global development challenges.

1 PROJECT OVERVIEW: Objectives, design and key outcomes.

2 MAJOR AREAS OF IMPACT: Description of program activities and their impact.

3 LESSONS LEARNED AND RECOMMENDATIONS: Information to help inform the design and implementation of future iterations of QES-AS and other similar programs.

This report is divided into three sections:

The findings in this report are based on data and information contained within QES-AS partners' and scholars' reports. These reports reside in Universities Canada's online QES-AS portal, which serves as a database and repository of all information related to the program.

PROGRAM OVERVIEW

In 2012, Canada celebrated the 60th anniversary of Her Majesty Queen Elizabeth II's accession to the Throne. To honour this milestone the Government of Canada, in collaboration with provincial governments and the private sector, funded an exciting, new initiative: the Canadian Queen Elizabeth II Diamond Jubilee Scholarships program (QES). The program officially launched in 2014 with the aim of supporting prospective future leaders around the world and strengthening Canadian universities' global partnerships. Since that time, through 106 projects managed by 48 Canadian universities, QES has successfully mobilized a dynamic community of young, global leaders whose accomplishments have made, and will continue to make, lasting impacts at home and abroad. The QES Program is managed by three partner organizations: Rideau Hall Foundation, Universities Canada and Community Foundations of Canada.

Students and researchers selected for the scholarship program are designated "Queen Elizabeth Scholars." Through the program, they engage with communities across the globe, learn about different cultures and participate in academic and research projects that impact the world. They also become part of a global network of Queen Elizabeth Scholars who share knowledge, exchange ideas and collaborate on meaningful initiatives.

In 2016, building on the success of the QES program, the International Development Research Centre (IDRC) and the Social Sciences and Humanities Research Council (SSHRC) contributed funding to expand the program to early-career, doctoral and post-doctoral researchers. This phase of the QES program was named the QES-Advanced Scholars (QES-AS) program, and it welcomed scholars from both Canada and LMICs around the globe to help develop solutions to complex national and global challenges.

The QES-AS program's goal was to strengthen a global community of young leaders through scholarship funding for research and global talent mobility, and to strengthen the research capacity of LMIC partner institutions. By identifying and supporting scholars from Canada and LMICs, QES-AS enabled capacity development through research, leadership development, community engagement and knowledge transfer. Through their experiences collaborating with others, identifying problems, conducting joint research and engaging with communities, scholars developed valuable skills and increased their capacity to carry out research on real-world issues. The scholars created shared human experiences that supported them and others in their shared journeys towards becoming leaders and global citizens. Almost all (94%) scholars confirmed that the QES experience improved their leadership skills and 87% expressed that they had achieved their learning goals.

Program targets

The QES-AS focused on strengthening LMIC partner institutions by engaging incoming LMIC scholars and outgoing Canadian scholars in research, community engagement and knowledge transfer activities. The program targeted an overall participation rate of:

- 75% incoming scholars from eligible LMICs; and
- 25% Canadian outgoing scholars.

The program aimed to support a total of 400 scholars with a 50% gender balance of female and male scholars.

“I have developed expertise at the administrative level by participating in the development or renewal of interuniversity agreements.”

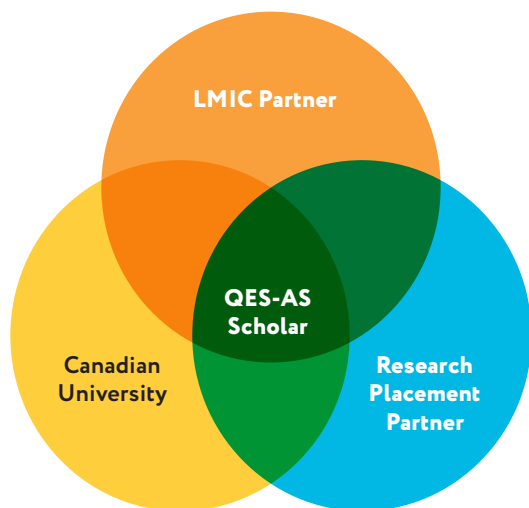
Nicolas Lepine, doctoral researcher from Canada, Lakehead University



Ratana Ly (right), doctoral researcher from Cambodia, University of Victoria, participating in a seminar on human rights at her Research Placement at the Raoul Wallenberg Institute of Human Rights and Humanitarian Law in Cambodia.



Program implementation model



The QES-AS program supported three categories of scholars: early-career researchers, doctoral researchers and post-doctoral researchers. Scholars participated in:

- global talent mobility and research placements;
- partnerships between Canadian universities, LMIC institutions and RPPs;
- leadership development, networking and community engagement activities; and
- research on specific focus areas.

GLOBAL TALENT MOBILITY AND RESEARCH PLACEMENTS

The QES-AS program involved three types of mobility:

- Canada-LMIC mobility, where Canadian citizens or permanent residents conducted their research in an eligible LMIC;
- LMIC-Canada mobility, where citizens from eligible countries conducted their research in Canada; and
- LMIC-LMIC mobility, where citizens from eligible LMICs conducted their research in another eligible LMIC.

Each scholar was required to spend at least 30% of their award in a non-academic research placement and incoming scholars were expected to conduct their placements in Canada, the only exception being if the Canadian university or the LMIC institution had placement partners in the scholar's home country or another eligible country.

PARTNERSHIPS BETWEEN CANADIAN UNIVERSITIES, LMIC INSTITUTIONS AND RPPS

The QES-AS program followed a unique partnership-based model which brought together and leveraged strengths offered by Canadian universities, their LMIC partners and Research Placement Partners (RPPs). This model, with a 90-day minimum duration, made it possible for QES-AS scholars to engage in research related to real-world problems from a variety of angles.

QES-AS scholars were identified through a selection process involving both Canadian and LMIC partners. Once selected, their research topics and training plans were jointly agreed upon between Canadian and LMIC institutions.

LEADERSHIP DEVELOPMENT AND COMMUNITY ENGAGEMENT

Throughout their time in the QES-AS program, scholars were required to participate in leadership development and community engagement activities. The integration of academic and research experiences with cross-cultural experiences further supported scholars in their personal and professional growth. Such leadership development and community engagement activities included:

applying global experiences or knowledge to enhance the local community

participating in community events, such as roundtables, fora and panel discussions

strengthening character and professional skills through public speaking, networking, problem-solving and leadership activities

peer mentoring, knowledge sharing and networking between alumni and current scholars

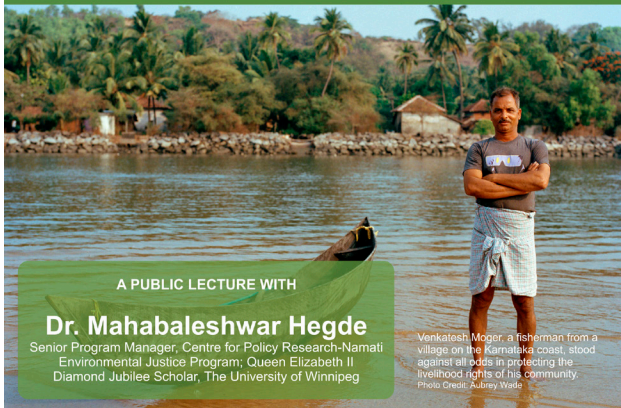
taking part in cross-cultural exchanges

FOCUS AREAS OF RESEARCH

The scholars were required to identify one of the following focus areas for their research. In some cases, scholars conducted interdisciplinary research in more than one of these focus areas. (See Annex 1.)

Areas of Focus	% of scholars
Food, environment and health	40
Climate change	36
Agriculture and food security	33
Maternal and child health	31
Governance and justice	20
Foundations for innovation	18
Employment and growth	16
Networked economies	8

Community responses to environmental challenges in India



A PUBLIC LECTURE WITH

Dr. Mahabaleshwar Hegde

Senior Program Manager, Centre for Policy Research-Namati Environmental Justice Program; Queen Elizabeth II Diamond Jubilee Scholar, The University of Winnipeg

Venkatesh Moger, a fisherman from a village on the Karnataka coast, stood against all odds in protecting the livelihood rights of his community.
Photo Credit: Aubrey Wade

Wednesday
March 11, 2020
12:30 -1:20 pm
5L24 Lockhart Hall

Sponsored by:
Department of Environmental
Studies and Sciences

pizza lunch

India has strong environmental regulation on paper but achieving environmental justice with these laws is often challenging. Communities dependant on natural resources are often severely affected by the lack of enforcement of these laws. The talk presents case studies connected to community participation in seeking environmental justice along the west coast of India. In particular, the lecture describes responses of affected communities in opposition to large coastal infrastructure projects and lessons learned from environmental advocacy India.

Dr. Hegde has a PhD in Marine Sciences from Goa University, Goa, India. As Program Manager of the Environmental Justice Project, Karnataka coast, he is involved in selecting and training paralegals from the coastal villages to conduct community surveys on the coastline. He and his team work towards the implementation of research findings and enforcement and compliance of environmental laws along the coast of Karnataka.



Mahabaleshwar Hedge, post-doctoral researcher from India, University of Winnipeg, offering a public lecture on environmental challenges in India.

“The large body of new knowledge created by QES-AS scholars and faculty mentors as reflected in the HCP Discussion Papers, Reports and Policy Briefs Series, as well as three special journal issues, three books and numerous peer-reviewed articles in high impact interdisciplinary journals testify to the success of the program in building a global network of young scholars willing and able to take the work forward. Many will now participate in the second phase of the Hungry Cities Partnership through the 2021-28 SSHRC Partnership Grant for a 7 year project on the theme of South-South Migration and Migrant Food Insecurity in the Global South: Interactions, Impacts and Interventions which was launched in December.”

Dr. Jonathan Crush, Director of Hungry Cities Partnerships (HCP), Balsillie School of International Affairs, Wilfrid Laurier University



MAJOR AREAS OF IMPACT: DESCRIPTION AND OUTCOMES

Key outputs and outcomes

The QES-AS program's impact can be measured in two primary ways: 1) the number of scholars supported through global talent mobility and research placements, and 2) scholars' reported level of satisfaction with meeting their learning and professional development objectives.

Global talent mobility and research placements

LEVELS OF SATISFACTION

87%

of scholars reported meeting or exceeding their scholarship goals

97%

of scholars reported the QES experience has strengthened their knowledge and skills

94%

of scholars reported increased leadership skills

95%

of scholars reported improved my networking skills

97%

of scholars reported enhanced personal and professional networks

85%

of scholars reported time spent in their country of placement met their expectations

91%

of scholars reported time spent with their Research Placement Partner met their expectations

97%

of scholars reported better communications skills

Of the 369 scholars:

- 312 (82%) were from 44 LMICs in Africa, Asia and Latin America.
- These LMIC scholars were split evenly between females (156 individuals or 50%) and males (155 individuals or 49.6%), with one additional scholar who chose not to identify their gender (0.4%).
- 57 (18%) scholars were Canadian, including 32 females (56.1%) and 25 males (43.9%).

These figures demonstrate that the QES-AS program met its target of supporting at least 50% female scholars and at least 75% from LMICs.

Gender	Doctoral	Post doc	ECR
Female	97	42	49
Male	89	39	52
Did not disclose	1		

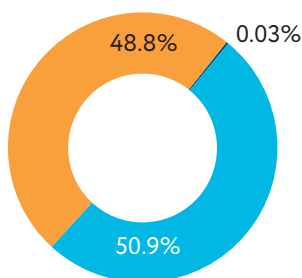
FEMALE SCHOLARS IN LMICS AND CANADA BY LEVEL

	LMIC	Canada	Total
Early career researchers	38	11	49
Doctoral researchers	80	17	97
Post-doctoral researchers	38	4	41
Total	156	32	187

1775

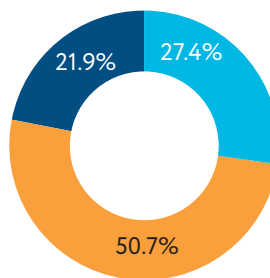
QES-AS scholars collectively produced more than 1775 reports, blogs, posters, presentations and publications - many interdisciplinary and collaborative in nature.

TOTAL NUMBERS



- Female (188)
- Male (180)
- Chose not to identify gender (1)

LEVELS

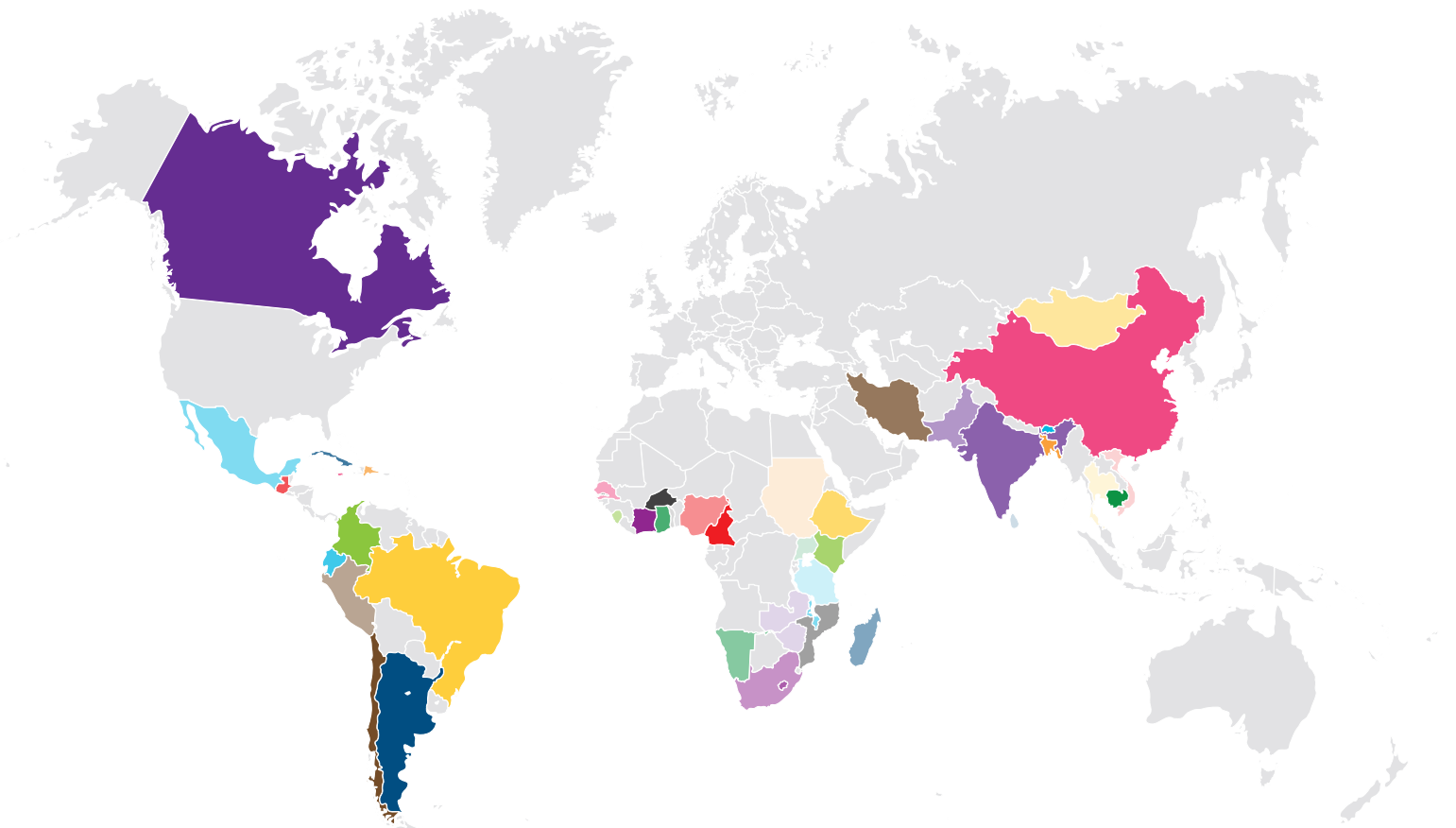


- Early-career researchers (101)
- Doctoral researchers (187)
- Post-doctoral researchers (81)

“The QES-AS funded researchers have and are continuing to support CGHR in conducting epidemiological research, through their technical work in data analysis in Sierra Leone, Colombia and India.”

Prabhat Jha, Director, Centre for Global Health Research (CGHR),
Research Placement Partner of the University of Toronto

THE QES-AS PROGRAM SUPPORTED RESEARCHERS FROM 45 COUNTRIES (SEE ANNEX 2.)



- | | | | | |
|----------------|------------------------------------|--------------|----------------|------------|
| ● Argentina | ● Colombia | ● Guatemala | ● Mozambique | ● Tanzania |
| ● Bangladesh | ● Cote d'Ivoire | ● India | ● Namibia | ● Thailand |
| ● Bhutan | ● Cuba | ● Iran | ● Nigeria | ● Togo |
| ● Brazil | ● Democratic Republic of the Congo | ● Jamaica | ● Pakistan | ● Uganda |
| ● Burkina Faso | ● Ecuador | ● Kenya | ● Peru | ● Vietnam |
| ● Cambodia | ● Ethiopia | ● Lesotho | ● Senegal | ● Zambia |
| ● Cameroon | ● Gambia | ● Madagascar | ● Sierra Leone | ● Zimbabwe |
| ● Canada | ● Ghana | ● Malawi | ● South Africa | |
| ● Chile | | ● Mexico | ● Sri Lanka | |
| ● China | | ● Mongolia | ● Sudan | |



Partnerships and skills development

- **LMIC institutions:** Incoming scholars to Canada came from and represented 109 LMIC institutions across the globe. A complete list of LMIC partner institutions by country and by Canadian university is provided in **Annexes 3 and 4**. Some LMIC institutions partnered with more than one Canadian university, given that there were fewer LMIC institutions providing advanced, research-based programs.
- **Research Placement Partners:** In total, 222 RPPs participated in this program, providing real-world research experience to the scholars. RPPs were diverse, ranging from civil society organizations to government-run health facilities to private sector research institutes to international financial institutions. For a complete list of RPPs by Canadian university and by country see **Annexes 5 and 6**.
- **New partnerships:** The QES-AS strengthened existing partnerships while also providing support to Canadian universities wanting to establish new ones. Of the 109 participating LMIC institutions, 52.7% were new partners for Canadian universities. Similarly, 73.4% of RPPs were new collaborations and relationships.
- **Professional and leadership skills:** The QES-AS program helped promising young scholars develop the strong leadership, networking and professional skills required to create positive, lasting change. Scholars reported that their most improved skills were related to leadership and teamwork, conducting research and communications.

GENDER CONSIDERATION LEADERSHIP OPPORTUNITY MULTIDISCIPLINARY PERSPECTIVES COLLABORATION AWARENESS CHALLENGE KNOWLEDGE MOBILISATION NO SINGLE SOLUTION

Global citizenship: Increasing knowledge and skills through the academic and professional experiences of young leaders

The most significant impact of the QES-AS program was its success in shaping 369 global, skilled citizens.

The QES-AS program mobilized global talent and helped build the collaborative, global relationships needed to find future-oriented and interdisciplinary solutions to the world's complex problems. Canadian universities offered scholars opportunities for leadership development, networking and community engagement.

“I was able to observe first hand how another research organisation conducts studies when working on health-related topics with Indigenous and/or vulnerable population.”

Mayari Hengstermann, post-doctoral researcher from Guatemala, University of Saskatchewan

LEADERSHIP DEVELOPMENT AND PROFESSIONAL SKILLS

Through the QES-AS program, scholars engaged in a variety of leadership, professional development and community engagement activities. As a result, scholars reported improved leadership skills and teamwork abilities. Participants also reported improvements in other skills, including language and research communications skills, as well as their ability to conduct research, draft publications and participate in interdisciplinary research.

This combination of skills is essential for scholars pursuing professional growth in their respective fields and those looking to lead lasting, positive change in the world. These skills are also essential for knowledge transfer, which happened in their research through: sharing knowledge verbally (presentations), writing (blogs, posters and publications), and other opportunities. QES-AS scholars reported that the program offered them ample opportunities to acquire and build the professional skills required to participate in knowledge transfer. A list of the improved skills, as reported by QES-AS participants, is included below.

Leadership and teamwork

Conduct research

Publication and research communications

Interdisciplinary research

Language skills

Assist with networking

Research ethics

Knowledge mobilization and dissemination

Research methods and theories

Data management and analysis

Prepare proposals

Organize-deliver workshops

Collect survey and baseline data

Develop training materials

Prepare policy documents and reports

Project and human resources management

Digital literacy

Conduct advocacy

Develop new systems

“Although I did not manage to travel to Canada where the initial research was planned, the water, sanitation and covid 19 study conducted in country (Kenya) provided a unique experience to conduct research on a fast evolving global pandemic and add to the knowledge on how existing water and sanitation challenges in a developing country such as Kenya affect the control of the pandemic.”

Rosemary Musuva, early career researcher from Kenya, University of Waterloo



Mohamadou Sall, early career researcher from Senegal, Université de Moncton, working with local community members.



ADDITIONAL RESEARCH SKILLS

In addition to leadership development and networking opportunities, participating Canadian universities offered scholars training to develop advanced research skills. Training covered content-related research training, communication, general research methodology, qualitative and quantitative research, and other useful research-related skills. This training gave scholars the skills and knowledge to successfully undertake research, draft formal publications, and to produce and disseminate conference papers, YouTube videos, undertake research posters and other research-based literature.

Content-related research training	Communication	General research methodology	Qualitative research training	Quantitative research training	Other work skills development
Session on Gender and Climate change	Climate conversation and societal transformational leadership	Data management	Qualitative Research Method-Nvivo	Biostatistics and Sample Size	Preceptorship training
Climate Change and STEM	Cross-cultural Team Communications	Sex and Gender in Primary Data Collection with Human Participants	My Research - Endnote Essentials	Quantitative research method- Introduction to R	Creating a safe clinical environment
Gender, ethics and equity	Preparing a paper for publication	Systematic Review Research Methodology	Qualitative Research Methodology training	Introduction to Big Data	Proposal writing
Indigenous cultural awareness	Communicating Your Research	Design Thinking	Research Methods and Theories	Systematic review and Meta-analysis workshop	How to conduct advocacy
The Role of Emotions in Research	Writing and Researching for Literature Review	Core Ethics Training		Coding of geospatial analysis in R	Student mentorship
	Voice and Posture in presentations	Integrating gender perspectives into research agendas		Data Management and Analysis	Knowledge mobilisation and dissemination
	Developing Policy Briefs				Community involvement and participation in research

Strengthening research capacity of LMIC partner institutions

The QES-AS program's overall objective was to strengthen the capacity of LMIC partner institutions through knowledge transfer, dissemination of research and scholar mobility. Final narrative reports by participating Canadian universities provide examples of the knowledge transfer that occurred between:

- individual scholars and LMIC institutions; and
- research placement partners, LMIC scholars and Canadian universities and/or other community actors.

Knowledge transfer activities for LMIC partner institutions

As reported by Canadian universities, scholars participated in knowledge transfer in different ways, including through knowledge-sharing workshops, in-person and virtual presentations, brown bag seminars, conference presentations and written products, such as posters and publications. Some of these knowledge transfer activities even helped universities develop educational materials to further disseminate the knowledge in their communities.

For example, a McGill University scholar from the University of Ghana recorded two virtual presentations: (i) Household Value Chain and (ii) how information is acquired by value chain actors and how the knowledge is used. Because of their usefulness, the University of Ghana adapted these presentations as educational resources to share with their undergraduate and graduate students.

Knowledge transfer activities with RPPs, LMIC scholars, Canadian universities and/or other community actors

Some knowledge transfer activities took place on a larger scale, involving research hubs and clusters, multiple scholars and increased involvement from the institution. For example, the QES-AS program supported an international network of 61 legal scholars and social scientists who were examining COVID-19 policies and practices across Asia. This network, led by Victor V. Ramraj at the University of Victoria, published a collection of essays entitled *Covid-19 in Asia: Law and Policy Contexts*. The collection included contributions by QES-AS partner institutions in Bhutan, Cambodia, India, and Vietnam as well as QES-AS scholars and their colleagues. Published in Asia in December 2020, nine months after the onset of the pandemic, it included a range of disciplinary perspectives on the pandemic from, among others, legal, epidemiological, business, medical political science and software engineering and covered topics such as containment measures and emergency powers.

Knowledge transfer impacts on individuals and institutions

QES-AS knowledge transfer activities helped build research and leadership capacities among individuals and institutions. Scholars transferred knowledge through publications, events, collaborative research, expert advice training and mentorship. Unfortunately, the COVID-19 pandemic affected some scholars' ability to deliver on in-person activities and led to increased use of digital technology and virtual platforms. The results of knowledge-transfer activities were as follows:

- Individual: Increase in leadership, research and communication capacities of scholars
- Institutional: Increase in capacities to conduct new and interdisciplinary research

DIVERSITY IN KNOWLEDGE-TRANSFER ACTIVITIES

Event-based knowledge transfer activities: Presentations, workshops, seminars and conferences

Many QES-AS scholars transferred knowledge through events ranging from small gatherings with a limited audience to large, complex meetings. Due to the COVID-19 pandemic, several of these events took place virtually. One type of small-scale event is presentations by individual scholars to their peers and supervisors. Such presentations typically focused on disseminating ongoing or completed research findings and helped grow the scholars' confidence and presentation skills. Scholars also learned from feedback provided on their presentations.

Similarly, workshops and seminars helped scholars develop professional skills and research capacities. Scholars reported that engaging with others through such events helped them consider other perspectives -- an essential skill to gain a deeper and broader understanding of problems and their potential solutions. In some cases, scholars provided support in organizing conferences, which helped them develop leadership and organizational skills.

York University's partnerships with its LMIC partners, Federal Rural University of Rio de Janeiro, Brazil; University of Los Lagos, Chile; and University of South Africa, Cape Town on "Climate Justice, Commons Governance, and Ecological Economics" created collaborative spaces for QES-AS scholars. These spaces helped identify synergies, supported dialogue and advanced collaborative research. Scholars worked together in creating and sharing knowledge through presentations, webinars, and videos.



Development and sharing of materials, curriculums and tools for academic, research and community programs

In some cases, scholars translated their research outputs into information and teaching materials, such as new academic courses for LMIC institutions' undergraduate and graduate students. Scholars also developed community-based research tools, materials and methodologies, which strengthened research capacities of local institutions.

One of Ryerson University's post-doctoral researchers from the University of Antioquia, Medellin, Colombia, conducted research on waste management which resulted in the production of two manuals on waste management by the City of Cartagena, Colombia:

1. Guía Para La Formulación De Planes De Saneamiento Y Manejo De Vertimientos-PSMV (Guide for the Formulation of Sanitation Plans and Management of Discharges), Technical Report published for el Establecimiento Público Ambiental de Cartagena, Colombia, 2021.
2. Manual Para La Gestión Y Manejo Los Residuos Solidos (Handbook for Solid Waste Management and Handling), Technical Report published for el Establecimiento Público Ambiental de Cartagena, Colombia, 2021.

Establishing new and strengthening existing research clusters, hubs and centres

Providing collaborative research spaces is an important part of fostering knowledge transfer. Such spaces helped bring together researchers interested in particular research topics, while also supporting inter-disciplinary research. Some Canadian universities worked with LMIC partner institutions in engaging QES-AS scholars in established research centres, clusters and hubs. This resulted in amplifying and expanding existing institutional capacities. There are a few examples in which QES-AS scholars supported new research initiatives and helped built new institutional capacities.

Université de Moncton's partnership with l'Institut National pour la Recherche et l'étude Agronomique (Democratic Republic of the Congo (DRC)) resulted in building leadership, networking and institutional capacities for research on human nutrition and food security. QES-AS scholars from DRC gained experience researching topics of relevance to their region. Upon their return, these learnings were integrated into the Institute's structures. This not only built the Institute's capacity but also helped create local leadership that advanced knowledge and networks to support initiatives on a topic of local relevance and interest.

"The SFU's QES-AS program was an excellent experience for all the three BZU participating researchers. It has improved not only their professional and technical skills but also enhanced their social and ethical framework. The academic and research outlook of the participants was greatly enhanced and their connections with global researchers are an asset for our institution. They have altogether strengthened our institutional research portfolio. Soon after coming back from SFU, the research and publications by the BZU participating researchers has been increased 3-4 times annually which is obviously an extra ordinary achievement."

Dr. Zahid Mahmood Khan, Professor and Chairman, Bahauddin Zakariya University, Multan, Pakistan, LMIC partner of Simon Fraser University

Digital technology and online platforms

Scholars used digital technology and online platforms to disseminate research. They connected with other scholars and researchers through virtual events including presentations, seminars and conferences. Digital technology mitigated the impact of the pandemic on scholars' ability to travel. Use of online meeting tools helped connect scholars with their research supervisors. The result was the continuation of research work even when travel was not possible. QES-AS scholars used social media (Twitter, Facebook, YouTube, LinkedIn) to engage with a wider audience.

In the case of the University of Ottawa, digital transformations and online knowledge transfer helped mitigate the impacts of Covid-19. The pandemic forced seminars of OpenAir -- a partnership involving the University of Ottawa, the University of Cape Town in South Africa, the University of Johannesburg in South Africa, Strathmore University in Kenya, the Nigerian Institute for Advanced Legal Studies, and the American University in Cairo, Egypt -- to move online, proving to be a positive change as it allowed anyone in the OpenAir network to participate.



Robbie Venis, doctoral researcher from Canada, Carleton University, presenting information to local community members.

Changes to organizational policies and practices

The changes reported by Canadian universities within the context of the program may not necessarily fall within the parameters of organizational policies and practices. They may be categorized as changes in approaches towards one or two aspects of a single program. Organizational changes mean macro-level changes within institutions that impact many individuals and departments which may only be measured a few years post projects.

Micro-level changes, as reported by Canadian universities, point to operational-level changes that may have a longer-term impact on some of the processes or culture of an organization. Following are some examples of such operational-level changes reported by Canadian partners:

- Leveraging online presence through an existing website to share and publish research by QES-AS scholars. This includes the use of social media tools like Facebook, Twitter and LinkedIn.
- Pivoting to online events during the pandemic resulting in reaching a wider audience.

On the other hand, some Canadian partners reported a few examples where research dissemination resulted in increased awareness among community stakeholders around a certain issue.

McGill University scholars conducted an evidence review on food availability, consumption, trade and food safety in Ghana between 2010 and 2020 to inform the development of food-based dietary guidelines there. The scholars presented their findings at an evidence validation workshop organized by the Ghana Food-Based Dietary Guidelines Multisectoral Technical Team. A manuscript, "Changes in food production, trade safety, and consumption in Ghana between 2010 and 2020," was submitted to the African Journal of Agriculture Nutrition and Development and will help define the future food-based guidelines for Ghana.

The responses to the question about organizational change varied between Canadian partners but did show some change that occurred due to knowledge transfer.



LESSONS LEARNED AND RECOMMENDATIONS

Considerations for future programming

Successful implementation of the QES-AS program depended on a few key factors: strong partnerships, clear communication, a focus on the scholar and well-articulated operational plans.

Focus on the scholar: The impact of the QES-AS can best be measured by scholars' performance; their ability to successfully undertake research, publish, engage with others and transfer knowledge. All planning decisions for a program such as this must take into account each scholar's journey and the requirements of their specific area of research.

Strong partnerships: Partnerships that were built on a shared vision and objectives created an environment where scholars thrived. Such harmonious partnerships were highly successful in identifying and selecting scholars in a timely and effective manner. It is therefore recommended that programs like the QES-AS are built on strong partnerships.

Planned leadership, networking and community engagement activities: Scholars benefitted from the leadership development, networking and community engagement activities offered through the program. The chance to explore a new country and connect with others – including other QES-AS scholars and alumni – was especially helpful for incoming scholars new to Canada.

RECOMMENDATIONS FROM QES PARTNERS

Feedback from university partners offers insights for future international research collaboration programs, particularly in the area of program design:

PROGRAM DESIGN

- Flexible program requirements (e.g., minimum stay period) are needed to account for the unique circumstances of women. It is very common in the LMIC institutions that women do not get their PhDs until after their children are a bit older so it is also important that programs are able to recruit older individuals.
- Provide clarity regarding special supports for women scholars to allow them to participate fully.
- Regularly review the level of funding per scholar to ensure it's not a barrier to participation.
- Flexible delivery of the program is possible with advances in technology and can be highly successful.
- Create options for broad-based awareness-building (e.g., free /open-access workshops and curriculum materials) on participatory research history, theory, methods, best practices and short-term hands-on experiences for researchers at all levels.
- Focus on one partner from one country and one research partner in Canada; design all activities to directly benefit their mandates.
- Significantly engage LMIC senior-level administrators at the very beginning and throughout the program as they will ultimately be responsible for the reintegration and transfer of knowledge.
- When there are extensive reporting requirements and multiple program components, the administrative burden can be heavy. In such cases the program design should include funding to provide administrative support.
- Ensure common understanding of terms by all partners.

“Through conducting quantitative and qualitative data analysis with my Research Placement Partner, I developed my skills in using the data analysis softwares STATA and MAXQDA. I also gained skills in constructing the Project Level Women’s Empowerment in Agriculture Index . My interaction with Grameen Foundation led to further collaborations with their team, primarily in assisting them with their next stage of research on better understanding gender and empowerment among cocoa farmers. They have used my research findings from their data to inform their gender related questions on the field.”

Aishat Zango Abdu, doctoral researcher from Nigeria, McGill University

CONCLUSION

The QES-AS program was successful in its mission to strengthen institutional capacities inside and outside of Canada, and to help shape global citizens and future leaders. Nearly 400 scholars improved their skills and gained knowledge that will help propel them forward in their endeavours. These scholars also helped build stronger links between universities and institutions around the world and helped share knowledge between them.

That said, the impacts of the QES-AS program extend much farther. Many years from now, these bright and ambitious scholars may leverage their experiences with the program to produce research that makes a positive impact on people and the planet we inhabit.

QES-AS scholars will always belong to a global community of compassionate, future-oriented leaders. It is through this powerful network and its ability to shape long-term, global citizens that the true impact of the QES-AS program shines through.



Patience Mukuyu (left), doctoral researcher from South Africa, York University, interviewing small-scale farmer.

“I strengthened the research network, creating new connections and accomplishing the first research collaboration between Indian Institute of Science (IISc) and the Laboratory for Alternative Energy Conversion at SFU, necessary groundwork for future joint research and pursuit of funding opportunities.”

Poovanna Cheppudira Thimmaiah, doctoral researcher from India, Simon Fraser University

“They have strengthened research capacity by forming interdisciplinary teams to write proposals, conduct research and also contributed to the proposal writing capacity of some health implementers within the region.”

N. Kugbey and P. Doegah, Senior Lecturer, and Research Associate, University of Health and Allied Sciences, Ghana, LMIC partner of Queen’s University



ANNEX 1

FOCUS AREAS OF RESEARCH

Focus areas	Priorities
Agriculture and Food Security To support innovation for more efficient and sustainable agricultural production to enhance food security, income, and nutrition that benefit small-scale farmers (particularly women).	<ul style="list-style-type: none">• Focus on new or underutilized crops, fruits, and vegetables, and high-value animal products to boost both incomes and nutrition.• Support projects with high potential for transferability and adoption with the active participation of the private sector or social entrepreneurship organizations.• Contribute to the development of improved market access and agricultural value chains for smallholders.• Support programming on financial services, small-scale mechanization, reduction of post-harvest losses, and youth employment in the agricultural sector.
Climate Change To support partnerships and networks that build evidence for solutions and the use of technology to generate social and economic gains and guard against future climate impacts.	<ul style="list-style-type: none">• Generate new knowledge and inform policy in hotspots vulnerable to climate change.• Increase the resilience of small and medium-sized cities to climate change paying particular attention to reducing the vulnerability of women.• Facilitate the financing of climate adaptation strategies, especially from private sources.
Employment and Growth To enhance the employment and economic opportunities of vulnerable groups, particularly women and youth.	<ul style="list-style-type: none">• Find solutions that remove barriers to women's economic empowerment.• Secure economic opportunities for young people.
Food, Environment and Health To develop evidence, innovations, and policies to improve health, build healthier food systems, and prevent non-communicable and infectious diseases.	<ul style="list-style-type: none">• Preventing and controlling infectious diseases of poverty such as Chagas disease in Central America and helminthic infections in Southeast Asia and China.• Preventing pandemic zoonotic infections such as Ebola.• Enabling countries to implement the most effective tobacco control measures to dramatically reduce tobacco use among poor populations.
Foundations for Innovation To build the human and organizational capital needed for innovation to support economic growth and development through programs that strengthen science, technology, engineering, and mathematics (STEM) skills and improve institutions.	<ul style="list-style-type: none">• Helping individuals apply STEM skills to address development and industrial problems• Strengthening the ability of science and technology organizations to contribute to innovation and growth

Focus areas

Priorities

Governance and Justice

To foster better and more inclusive governance and justice systems so that everyone can lead more secure and prosperous lives.

- Create safer spaces, free from violent conflict and insecurity
- Empower vulnerable groups, particularly women and girls, to prevent and overcome gender violence

Maternal and Child Health

To save and improve lives of women and children, by developing solutions that promote the quality and accountability of health services for the most vulnerable.

- Generate innovations for better-quality, more accessible health services
- Strengthen health information systems for greater accountability

Networked Economies

To create inclusive economic opportunities and advance democracy in the developing world.

- Test and scale digital innovations to improve entrepreneurship, education, and democracy. Improve social and commercial entrepreneurship, and build an understanding of how digital innovations enhance or hinder democratic governance, education, and economic opportunities.
- Connect the next billion to economic opportunities. Ensure the Internet is accessible, affordable, and usable by those at the bottom of the economic pyramid, and support research that identifies gendered and socio-economic divisions of access for the next billion.
- Improve governance of cyberspace. Advance a nuanced understanding of the challenges of Internet governance and provide evidence-based solutions to the legal, technical, and security challenges of organizations enforcing regulations in cyberspace.



ANNEX 2

LIST OF COUNTRIES WITH NUMBERS OF SCHOLARS DISAGGREGATED BY GENDER

Country	Total	Male	Female	X
Argentina	3	1	2	
Bangladesh	1		1	
Bhutan	2	2		
Brazil	6	3	3	
Burkina Faso	7	5	2	
Cambodia	2		2	
Cameroon	6	4	2	
Canada	57	25	32	
Chile	3	2	1	
China	12	6	6	
Colombia	24	13	11	
Cote d'Ivoire	1		1	
Cuba	1		1	
Democratic Republic of the Congo	5	3	1	1
Ecuador	7	3	4	
Ethiopia	7	6	1	
Gambia	1	1		
Ghana	68	33	35	
Guatemala	4		4	
India	18	11	7	
Iran	5	2	3	
Jamaica	1	1		
Kenya	7	1	6	
Lesotho	1	1		
Madagascar	2	2		
Malawi	16	11	5	
Mexico	1		1	
Mongolia	5	1	4	

Country	Total	Male	Female	X
Mozambique	4	3	1	
Namibia	3	1	2	
Nigeria	13	4	9	
Pakistan	10	4	6	
Peru	1	1		
Senegal	4	3	1	
Sierra Leone	3	3		
South Africa	9	3	6	
Sri Lanka	7	5	2	
Sudan	1		1	
Tanzania	18	6	12	
Thailand	9	2	8	
Togo	1	1		
Uganda	5	3	2	
Vietnam	1		1	
Zambia	4	2	2	
Zimbabwe	2	1	1	



ANNEX 3

LMIC PARTNER INSTITUTIONS BY COUNTRY

Country	LMIC partner institution	Canadian University
Argentina	Universidad Nacional del Sur	University of Regina
Argentina	National University of La Plata	University of Saskatchewan
Bangladesh	International Centre for Climate Change and Development	University of Waterloo
Bangladesh	Bangladeshi Health Professions Institute (BHPI)	Queen's University
Bhutan	Jigme Singye Wangchuck School of Law	University of Victoria
Brazil	Oswaldo Cruz Foundation	University Of Toronto
Brazil	International Center for Equity in Health Universida de Federal de Pelotas	University Of Toronto
Brazil	Federal Rural University of Rio de Janeiro	York University
Brazil	Federal University of Minas Gerais	York University
Brazil	University of Sao Paulo	University of Waterloo
Brazil	University of São Paulo, Luis de Queiroz College of Agriculture	York University
Burkina Faso	Institut Supérieur des Sciences de la Population	Université du Québec en Outaouais
Cambodia	Royal University of Law and Economics	University of Victoria
Cameroon	Université de Dschang	Université de Moncton
Cameroon	University of Buea	University of Regina
Cameroon	Dschang University	Wilfrid Laurier University
Cameroon	University of Yaoundé I	York University
Chile	University of Concepción	York University
Chile	University of Los Lagos	York University
China	Fujian Agriculture and Forestry University (FAFU)	Lakehead University
China	Wuhan University	Université de Montréal
China	China University of Geosciences	University of Waterloo
China	Beijing Normal University	University of Waterloo
China	Nanjing University	Wilfrid Laurier University
Colombia	National University of Colombia	Ryerson University
Colombia	Colombian School of Engineering (Escuela Colombiana de Ingenieria Julio Gravito)	Ryerson University
Colombia	University of Antioquia	Ryerson University
Colombia	University of Cartagena	Ryerson University

Country	LMIC partner institution	University
Colombia	Universidad Nacional de Colombia	University of Regina
Colombia	Universidad del Norte	University of Regina
Cuba	Center for Energy and Industrial Energy Processes Studies, University of Sancti Spiritus	Simon Fraser University
Democratic Republic of the Congo	University of Kinshasa	Queen's University
Democratic Republic of the Congo	Université des Pays du Grand Lacs DRC	Queen's University
Democratic Republic of the Congo	Université de Kinshasa	Université de Moncton
Ecuador	Universidad Nacional de Chimborazo (UNACH)	Lakehead University
Ecuador	Pontificia Universidad Católica del Ecuador	University of Regina
Ecuador	Escuela Superior Politécnica de Chimborazo (ESPOCH)	Lakehead University
Ethiopia	Bahir Dar University Institute of Technology	University of Calgary
Ethiopia	Mekelle University – College of Health Sciences e of Health Sciences	University Of Toronto
Gambia	Ministry of Health	University of Waterloo
Ghana	University for Health and Allied Sciences	Queen's University
Ghana	University of Ghana	University of Regina
Ghana	SD Dombo University of Business and Integrated Development Studies	University of Waterloo
Ghana	University of Ghana	Carleton University
Ghana	University of Ghana	McGill University
Ghana	University of Ghana, School of Nursing and Midwifery	University of Alberta
Ghana	University of Professional Studies, Accra	University of New Brunswick
Guatemala	University of San Carlos of Guatemala (USAC)	University of Saskatchewan
India	Indian Institute of Technology - Bombay	Simon Fraser University
India	Indian Institute of Technology - Guwahati	Simon Fraser University
India	Myra School of Business	University of New Brunswick
India	National Institute of Hydrology	University of Regina
India	ICMR – National Institute of Medical Statistics	University Of Toronto
India	Centre for Study of Regional Development, Jawaharlal Nehru University	University Of Toronto
India	Azim Premji University	University of Victoria
India	Amity University, Noida	Université de Montréal
India	Jindal Global University	University of New Brunswick
India	Indian Institute for Human Settlements	Wilfrid Laurier University
Iran	Gorgan University of Agricultural Sciences and Natural Resources	University of Waterloo



Country	LMIC partner institution	University
Iran	Amirkabir University of Technology	Simon Fraser University
Jamaica	University of West Indies	Wilfrid Laurier University
Kenya	Kenyatta University	University of Waterloo
Kenya	University of Nairobi, Institute for Climate Change and Adaptation	York University
Kenya	Centre for Intellectual Property and Information Technology Law (CIPIT), Strathmore University	University of Ottawa
Kenya	Kenya Medical Research Institute	University of Waterloo
Kenya	University of Nairobi	Wilfrid Laurier University
Madagascar	Université d'Antananarivo	University of Regina
Malawi	Livingstonia University	Wilfrid Laurier University
Malawi	Mzuzu University	Carleton University
Malawi	Mzuzu University	University of New Brunswick
Mongolia	Mongolian National University of Medical Sciences	Queen's University
Mozambique	Technical University of Mozambique	York University
Mozambique	Eduardo Mondlane University	Wilfrid Laurier University
Mozambique	Eduardo Mondlane University	York University
Namibia	University of Namibia	Wilfrid Laurier University
Nigeria	African Regional Institute for Geospatial Information Science and Technology	University of Waterloo
Nigeria	Obafemi Awolowo University	York University
Pakistan	Aga Khan University, School for Nursing and Midwifery	University of Calgary
Pakistan	Bahauddin Zakariya University	Simon Fraser University
Pakistan	Institute of Environmental Engineering and Research, UET Lahore	Simon Fraser University
Pakistan	Sindh Agricultural University	University of Waterloo
Peru	Pontifical Catholic University of Peru	University of Calgary
Rwanda	African Institute for Mathematical Sciences	University of Calgary
Senegal	Université Cheikh Anta Diop	Université de Moncton
Sierra Leone	Njala University, School of Community Health Sciences	University Of Toronto
South Africa	University of Pretoria	University of Waterloo
South Africa	University of Johannesburg	York University
South Africa	University of Cape Town	York University
South Africa	Intellectual Property Unit, University of Cape Town	University of Ottawa
South Africa	SARChI Research Chair in Intellectual Property, Innovation and Development, University of Cape Town	University of Ottawa
South Africa	SARChI Research Chair in Industrial Development, University of Johannesburg	University of Ottawa
South Africa	African Centre for Cities, University of Cape Town	Wilfrid Laurier University

Country	LMIC partner institution	University
South Africa	University of KwaZulu-Natal, Centre for Civil Society	York University
Sri Lanka	International Water Management Institute	University of Waterloo
Tanzania	Nelson Mandela African Institute of Science and Technology	Carleton University
Tanzania	Catholic University of Health and Allied Sciences	University of Calgary
Tanzania	Nelson Mandela African Institution of Science and Technology	University of Saskatchewan
Thailand	Mae Fah Luang University	Queen's University
Thailand	Chiang Mai University, Faculty of Law	University of Victoria
Thailand	King Mongkut's University of Technology Thonburi	University of Regina
Thailand	Chulalongkorn University	University of Regina
Uganda	Uganda Christian University	University of Waterloo
Vietnam	Hanoi Law University	University of Victoria
Zambia	University of Zambia	Queen's University
Zambia	University of Zambia	University of Waterloo
Zambia	University of Barotseland	University of Waterloo
Zambia	Centre for Primary Care Research	University of Waterloo
Zambia	Copperbelt University	University of Waterloo
Zimbabwe	University of Zimbabwe	Wilfrid Laurier University



ANNEX 4

LMIC PARTNER INSTITUTIONS BY CANADIAN UNIVERSITY

University	LMIC Partner Institution	Country
Carleton University	Mzuzu University	Malawi
Carleton University	Nelson Mandela African Institute of Science and Technology	Tanzania
Carleton University	University of Ghana	Ghana
Lakehead University	Escuela Superior Politécnica de Chimborazo (ESPOCH)	Ecuador
Lakehead University	Fujian Agriculture and Forestry University (FAFU)	China
Lakehead University	Universidad Nacional de Chimborazo (UNACH)	Ecuador
McGill University	University of Ghana	Ghana
Queen's University	Bangladeshi Health Professions Institute (BHPI)	Bangladesh
Queen's University	Mae Fah Luang University	Thailand
Queen's University	Mongolian National University of Medical Sciences	Mongolia
Queen's University	Université des Pays du Grand Lacs DRC	Democratic Republic of the Congo
Queen's University	University for Health and Allied Sciences	Ghana
Queen's University	University of Kinshasa	Democratic Republic of the Congo
Queen's University	University of Zambia	Zambia
Ryerson University	Colombian School of Engineering (Escuela Colombiana de Ingeniería Julio Gravito)	Colombia
Ryerson University	National University of Colombia	Colombia
Ryerson University	University of Antioquia	Colombia
Ryerson University	University of Cartagena	Colombia
Simon Fraser University	Amirkabir University of Technology	Iran
Simon Fraser University	Bahauddin Zakariya University	Pakistan
Simon Fraser University	Center for Energy and Industrial Energy Processes Studies, University of Sancti Spiritus	Cuba
Simon Fraser University	Indian Institute of Technology - Bombay	India
Simon Fraser University	Indian Institute of Technology - Guwahati	India
Simon Fraser University	Institute of Environmental Engineering and Research, UET Lahore	Pakistan
Université de Moncton	Université Cheikh Anta Diop	Senegal

University	LMIC Partner Institution	Country
Université de Moncton	Université de Dschang	Cameroon
Université de Moncton	Université de Kinshasa	Democratic Republic of the Congo
Université de Montréal	Amity University, Noida	India
Université de Montréal	Wuhan University	China
Université du Québec en Outaouais	Institut Supérieur des Sciences de la Population (ISSP)	Burkina Faso
University of Alberta	University of Ghana, School of Nursing and Midwifery	Ghana
University of Calgary	African Institute for Mathematical Sciences	Rwanda
University of Calgary	Aga Khan University, School for Nursing and Midwifery	Pakistan
University of Calgary	Bahir Dar University Institute of Technology	Ethiopia
University of Calgary	Catholic University of Health and Allied Sciences	Tanzania
University of Calgary	Pontifical Catholic University of Peru	Peru
University of New Brunswick	Mzuzu University	Malawi
University of New Brunswick	University of Professional Studies, Accra	Ghana
University of New Brunswick	Jindal Global University	India
University of New Brunswick	Myra School of Business	India
University of Ottawa	Centre for Intellectual Property and Information Technology Law (CIPIT), Strathmore University	Kenya
University of Ottawa	Intellectual Property Unit, University of Cape Town	South Africa
University of Ottawa	SARCHI Research Chair in Industrial Development, University of Johannesburg	South Africa
University of Ottawa	SARCHI Research Chair in Intellectual Property, Innovation and Development, University of Cape Town	South Africa
University of Regina	Chulalongkorn University	Thailand
University of Regina	King Mongkut's University of Technology Thonburi	Thailand
University of Regina	National Institute of Hydrology	India
University of Regina	Pontificia Universidad Católica del Ecuador	Ecuador
University of Regina	Universidad del Norte	Colombia
University of Regina	Universidad Nacional de Colombia	Colombia
University of Regina	Universidad Nacional del Sur	Argentina
University of Regina	Université d'Antananarivo	Madagascar
University of Regina	University of Buea	Cameroon
University of Regina	University of Ghana	Ghana
University of Saskatchewan	National University of La Plata	Argentina
University of Saskatchewan	Nelson Mandela African Institution of Science and Technology	Tanzania
University of Saskatchewan	University of San Carlos of Guatemala (USAC)	Guatemala



University	LMIC Partner Institution	Country
University Of Toronto	Centre for Study of Regional Development, Jawaharlal Nehru University	India
University Of Toronto	ICMR – National Institute of Medical Statistics	India
University Of Toronto	International Center for Equity in Health Universida de Federal de Pelotas	Brazil
University Of Toronto	Mekelle University – College of Health Sciences e of Health Sciences	Ethiopia
University Of Toronto	Njala University, School of Community Health Sciences	Sierra Leone
University Of Toronto	Oswaldo Cruz Foundation	Brazil
University of Victoria	Azim Premji University	India
University of Victoria	Chiang Mai University, Faculty of Law	Thailand
University of Victoria	Hanoi Law University	Vietnam
University of Victoria	Jigme Singye Wangchuck School of Law	Bhutan
University of Victoria	Royal University of Law and Economics	Cambodia
University of Waterloo	African Regional Institute for Geospatial Information Science and Technology	Nigeria
University of Waterloo	Beijing Normal University	China
University of Waterloo	Centre for Primary Care Research	Zambia
University of Waterloo	China University of Geosciences	China
University of Waterloo	Copperbelt University	Zambia
University of Waterloo	Gorgan University of Agricultural Sciences and Natural Resources	Iran
University of Waterloo	International Centre for Climate Change and Development	Bangladesh
University of Waterloo	International Water Management Institute	Sri Lanka
University of Waterloo	Kenya Medical Research Institute	Kenya
University of Waterloo	Kenyatta University	Kenya
University of Waterloo	Ministry of Health	Gambia
University of Waterloo	SD Dombo University of Business and Integrated Development Studies	Ghana
University of Waterloo	Sindh Agricultural University	Pakistan
University of Waterloo	Uganda Christian University	Uganda
University of Waterloo	University of Barotseland	Zambia
University of Waterloo	University of Pretoria	South Africa
University of Waterloo	University of Sao Paulo	Brazil
University of Waterloo	University of Zambia	Zambia
Wilfrid Laurier University	African Centre for Cities, University of Cape Town	South Africa
Wilfrid Laurier University	Dschang University	Cameroon
Wilfrid Laurier University	Eduardo Mondlane University	Mozambique

University	LMIC Partner Institution	Country
Wilfrid Laurier University	Indian Institute for Human Settlements	India
Wilfrid Laurier University	Livingstonia University	Malawi
Wilfrid Laurier University	Nanjing University	China
Wilfrid Laurier University	University of Nairobi	Kenya
Wilfrid Laurier University	University of Namibia	Namibia
Wilfrid Laurier University	University of West Indies	Jamaica
Wilfrid Laurier University	University of Zimbabwe	Zimbabwe
York University	Eduardo Mondlane University	Mozambique
York University	Federal Rural University of Rio de Janeiro	Brazil
York University	Federal University of Minas Gerais	Brazil
York University	Obafemi Awolowo University	Nigeria
York University	Technical University of Mozambique	Mozambique
York University	University of Cape Town	South Africa
York University	University of Concepción	Chile
York University	University of Johannesburg	South Africa
York University	University of KwaZulu-Natal, Centre for Civil Society	South Africa
York University	University of Los Lagos	Chile
York University	University of Nairobi, Institute for Climate Change and Adaptation	Kenya
York University	University of São Paulo, Luis de Queiroz College of Agriculture	Brazil
York University	University of Yaoundé I	Cameroon



ANNEX 5

RESEARCH PLACEMENT PARTNERS BY CANADIAN UNIVERSITY

Canadian University	Research Placement Partner	Country
Carleton University	Ottawa Biosphere Eco-City (OBEC)	Canada
Carleton University	Clarissa Brocklehurst	Canada
Carleton University	Ecology Ottawa	Canada
Carleton University	Tucker House	Canada
Carleton University	Water Aid	Canada
Carleton University	CELADA	Canada
Carleton University	Agriculture and Agri-Food Canada	Canada
Carleton University	Cisco Industrial Research (Internet of Things)	Canada
Carleton University	African Journal of Management	Canada
Carleton University	Centre for Quantitative Analysis and Decision Support	Canada
Carleton University	National Resources Canada	Canada
Carleton University	PCS Biofuels	Canada
Carleton University	BW Global	Canada
Carleton University	Canada Africa Agriculture Summit	Canada
Carleton University	Carleton Climate Commons Working Group (CCC)	Canada
Carleton University	Carleton Sustainable Energy Research Centre – International Sustainable Transitions Conference	Canada
Carleton University	Logan Cochrane	Canada
Carleton University	Farm Radio International (FRI)	Ghana
Carleton University	African Institute for Mathematical Sciences (AIMS)	Ghana
Carleton University	Find Your Feet - Malawi	Malawi
Carleton University	Vwaza Marsh Wildlife Reserve	Malawi
Carleton University	Grand Palace Hotel	Malawi
Carleton University	Directorate of Agriculture, Environment and Natural Resources	Malawi
Carleton University	Soils Food and Healthy Communities Project (SFHC)	Malawi
Carleton University	OUT	South Africa
Carleton University	The Tanzania Association of the Deaf (TAD)	Tanzania
Carleton University	Tanzania Education and Micro Business Opportunity (TEMBO)	Tanzania

Canadian University	Research Placement Partner	Country
Lakehead University	Agriculture and Agri Food Canada	Canada
Lakehead University	Thunder Bay District Health Unit	Canada
Lakehead University	Millar Western Forest Products	Canada
Lakehead University	Hughes Winery	Canada
Lakehead University	Creekshore Farms	Canada
Lakehead University	KBM Resources	Canada
Lakehead University	Friends of the Finnish Labour Temple	Canada
Lakehead University	Vox Popular	Canada
Lakehead University	Thunder Bay Agriculture Research Association	Canada
Lakehead University	Matawa First Nations	Canada
Lakehead University	EkoRural	Ecuador
McGill University	Global Open Data for Agriculture and Nutrition (GODAN)	Canada
McGill University	Développement International Desjardins	Canada
McGill University	VIAMO Ghana	Ghana
McGill University	Densu Associates	Ghana
McGill University	Sinapi Aba Savings and Loans	Ghana
McGill University	Special Learning Materials Limited	Ghana
McGill University	Leti Arts	Ghana
McGill University	Legendary Foods Africa (previously ASPIRE)	Ghana
McGill University	Grameen Foundation	Ghana
McGill University	Olinga Foundation	Ghana
McGill University	World Vision/Vision Fund Ghana	Ghana
McGill University	World Vision Ghana/Mother Food International	Ghana
McGill University	Ministry of Food and Agriculture/ Women in Agriculture Development	Ghana
McGill University	IFPRI_Ghana	Ghana
McGill University	Transform Nutrition West Africa/IFPRI Senegal	Senegal
Queen's University	Centre for the Rehabilitation of the Paralyzed (CRP)	Bangladesh
Queen's University	KEYS job centre	Canada
Queen's University	KFL&A Public Health Unit	Canada
Queen's University	Street Health Centre	Canada
Queen's University	Institute of Clinical and Evaluative Sciences	Canada
Queen's University	Heal Africa Hospital	Democratic Republic of the Congo
Queen's University	Health Information Systems Working Group	Thailand



Canadian University	Research Placement Partner	Country
Ryerson University	Centro de pensamiento de Cartagena de Indias y Bolívar (Center of thought of Cartagena and Bolívar)	Colombia
Ryerson University	Establecimiento publico Ambiental de Cartagena (EPA)	Colombia
Ryerson University	Observatorio del Caribe (Colombian Caribbean Observatory)	Colombia
Simon Fraser University	Point 3 Biotech Corp.	Canada
Simon Fraser University	Terrella Energy Systems	Canada
Simon Fraser University	Core Energy Recovery Solutions	Canada
Simon Fraser University	Delta Q Technologies	Canada
Simon Fraser University	Fraser Basin Council (FBC)	Canada
Université de Moncton	Organisation Action pour la biodiversité et la gestion des terroirs	Cameroon
Université de Moncton	Institut pour l'étude et la recherche agronomique de Luki	Democratic Republic of the Congo
Université de Moncton	Région médicale de Matam	Senegal
Université de Moncton	Région médicale de Kolda	Senegal
Université de Moncton	Ministère de l'éducation nationale / Division contrôle médicale	Senegal
Université de Montréal	Canadian Coalition for Global Health Research	Canada
University of Alberta	Tamale Teaching Hospital	Ghana
University of Alberta	Ghana Health Service – Research Division	Ghana
University of Alberta	The Ngleshie Amanfro Polyclinic	Ghana
University of Alberta	Ga South Municipal Hospital	Ghana
University of Alberta	Manna Mission Hospital	Ghana
University of Alberta	Old Ningo Health Centre	Ghana
University of Alberta	Koforidua Regional Hospital/ Eastern Regional Hospital	Ghana
University of Alberta	University of Ghana Hospital Limited (Legon Hospital)	Ghana
University of Alberta	The King's Academy	Ghana
University of Alberta	Princess Marie Louise Children's Hospital	Ghana
University of Alberta	Mercy Women's Hospital, Fistula Centre,	Ghana
University of Alberta	37 Military Hospital Antenatal Unit	Ghana
University of Alberta	37 Military Hospital, Metabolic Unit	Ghana
University of Alberta	Lekma Hospital Teshie-Nungua	Ghana
University of Alberta	Korle Bu Teaching Hospital	Ghana
University of Alberta	La Dadekotopon municipal Education Office	Ghana
University of Alberta	Shai-Osudoku District Hospital (SODH)	Ghana
University of Alberta	The Street Academy	Ghana

Canadian University	Research Placement Partner	Country
University of Alberta	The Street Academy, Sexual Reproductive Health	Ghana
University of Alberta	Korle-Bu Teaching Hospital, Legon hospital, La General hospital	Ghana
University of Alberta	Street Children Empowerment Foundation	Ghana
University of Calgary	Alberta Health Services	Canada
University of Calgary	International Water Management Institute	Ethiopia
University of Calgary	Eastern Nile Technical Regional Office	Ethiopia
University of Calgary	Eternal Brains Consult	Ghana
University of Calgary	Aga Khan Hospital For Women and Children	Pakistan
University of Calgary	Koohi Goth Hospital	Pakistan
University of Calgary	Instituto Científico del Agua	Peru
University of Calgary	Quantum Leap Africa	Rwanda
University of Calgary	Bugando Medical Centre	Tanzania
University of Calgary	Geita Regional Referral Hospital	Tanzania
University of New Brunswick	Siemens Canada	Canada
University of New Brunswick	Planet Hatch	Canada
University of New Brunswick	Thomson Consult	Malawi
University of Ottawa	CODE Canada	Canada
University of Ottawa	CARE Canada	Canada
University of Ottawa	Partnership for Economic Policy (PEP)	Canada
University of Ottawa	Feminist Alliance for International Action (FAIFA)	Canada
University of Ottawa	International Telecommunication Union (ITU)	Canada
University of Ottawa	Trade Facilitation Office (TFO) Canada	Canada
University of Ottawa	AI for Good Foundation	Canada
University of Ottawa	Samuelson-Glushko Canadian Internet Policy and Public Interest Clinic (CIPPIC)	Canada
University of Ottawa	Bioeconomy Lab	Canada
University of Ottawa	International Institute for Sustainable Development (IISD)	Canada
University of Ottawa	African Trade Policy Centre	Ethiopia
University of Ottawa	Kazuri	Kenya
University of Ottawa	African Centre for Technology studies (ACTS)	Kenya
University of Ottawa	Accountability Lab	Liberia
University of Ottawa	KilSah Consulting	Nigeria
University of Ottawa	INGENIO	South Africa
University of Ottawa	Hillcrest Aids Centre Trust	South Africa
University of Ottawa	AL-Mahsoud Foundation	South Africa



Canadian University	Research Placement Partner	Country
University of Ottawa	BioCiTi Lab & Incubator	South Africa
University of Ottawa	South African Roadies Association	South Africa
University of Ottawa	East African Women in Business Platform (EAWiBP)	Tanzania
University of Ottawa	Choma Museum and Craft Centre	Zambia
University of Regina	Botswana International University of Science and Technology	Botswana
University of Regina	EPCOR	Canada
University of Regina	Canadian Research Institute for the Advancement of Women (CRIAOW)	Canada
University of Regina	New World Orange Biofuel	Canada
University of Regina	Center of Fuels and Energy from Biomass	Canada
University of Regina	Amnesty International	Canada
University of Regina	Royal Saskatchewan Museum	Canada
University of Regina	Ochapowace First Nation	Canada
University of Regina	International CCS Knowledge Centre	Canada
University of Regina	Husky Energy	Canada
University of Regina	PARC - Tree-ring Lab	Canada
University of Regina	United Youth Initiative Africa	Ghana
University of Regina	Isalo National Parks	Madagascar
University of Saskatchewan	Agro-ecological farm Santa Elena	Argentina
University of Saskatchewan	Morning Star Lodge	Canada
University of Saskatchewan	Saskatoon Community Foundation	Canada
University of Saskatchewan	Saskatoon Food Bank and Learning Centre	Canada
University of Saskatchewan	Street Culture Project	Canada
University of Saskatchewan	North Central Family Center and The Regina Food Bank	Canada
University of Saskatchewan	Wheel Mobile Medical Clinic	Canada
University of Saskatchewan	Centro de Salud de Chichicastenango [Chichicastenango Health Centre]	Guatemala
University of Saskatchewan	Redmisa a nivel Departamental de totonicapán y ALIANMISAR a nivel nacional	Guatemala
University of Saskatchewan	Secretariat of Food and Nutritional Security (SESAN)	Guatemala
University of Saskatchewan	Green Hope Organisation	Tanzania
University Of Toronto	Centre for Global Health Research	Canada
University Of Toronto	World Bank (Bogota office)	Colombia
University Of Toronto	Asian Development Bank	Philippines
University of Victoria	Bhutan's Office of Consumer Protection	Bhutan
University of Victoria	Bhutan National Legal Institute	Bhutan

Canadian University	Research Placement Partner	Country
University of Victoria	Raoul Wallenberg Institute (RWI)	Cambodia
University of Victoria	American Centre for International Labour Solidarity	Cambodia
University of Victoria	Province of British Columbia, Ministry of Attorney General, Policy and Legislation Division	Canada
University of Victoria	Environmental Law Centre	Canada
University of Victoria	Peacemakers Trust	Canada
University of Victoria	Lampion Pacific Law Corporation	Canada
University of Victoria	ENLAWTHAI Foundation (EnLAW)	Thailand
University of Victoria	Institute of Legal Science (ILS), under Ministry of Justice of Vietnam	Vietnam
University of Waterloo	Water & Sanitation for the Urban Poor	Bangladesh
University of Waterloo	Municipal Agency of the Environment and Urban Planning	Brazil
University of Waterloo	Canadian Alliance for Global Health	Canada
University of Waterloo	United Nations University – Inst. For Water, Environment and Health	Canada
University of Waterloo	World Wildlife Fund	China
University of Waterloo	Chinese Research Academy of Environmental Science	China
University of Waterloo	Neerman	India
University of Waterloo	Research Centre for Environment and Sustainable Development	Iran
University of Waterloo	COHESU	Kenya
University of Waterloo	UNDP GEF Small Grants Program	Pakistan
University of Waterloo	International Water Management Institute	South Africa
University of Waterloo	Save the Mothers East Africa	Uganda
University of Waterloo	Reach One Touch One Ministries	Uganda
University of Waterloo	Western Province Health Office	Zambia
Wilfrid Laurier University	Toronto Food Policy Council	Canada
Wilfrid Laurier University	Mennonite Economic Development Associates (MEDA)	Canada
Wilfrid Laurier University	Centre for International Governance Innovation (CIGI)	Canada
Wilfrid Laurier University	Nanjing Planck Organic Food Company	China
Wilfrid Laurier University	Youth Yeahmovement	India
Wilfrid Laurier University	Church and Society Programme, CCAP Livingstonia Synod	Malawi
Wilfrid Laurier University	Foundation for Children's Rights	Malawi
Wilfrid Laurier University	Statistics Namibia	Namibia
Wilfrid Laurier University	UNHCR	South Africa
Wilfrid Laurier University	Western Cape Government	South Africa



Canadian University	Research Placement Partner	Country
York University	Forum of Traditional Communities in Angra dos Réis	Brazil
York University	Associação dos Bananicultores e Productores Rurais da Comunidades Tradicionais do Sertão do Ubatumirim (ABU)	Brazil
York University	Observatório de territórios sustentáveis e saudáveis da Bocaína (OTSS)	Brazil
York University	MOVSAM (Movimento pelas Serras e Águas de Minas Gerais)	Brazil
York University	EduMite (Grupo de pesquisa Educação, Mineração e Território)	Brazil
York University	Prato Verde Sustentável	Brazil
York University	AMOCQ (Associação dos Moradores do Quilombo do Campinho da Independência)	Brazil
York University	ARQUISABRA (Associação de Remanescentes do Quilombo Santa Rita do Bracuí)	Brazil
York University	CONTAG (National Confederation of Rural Workers)	Brazil
York University	AGUA (Association of Solidarity Economy and Sustainable Development of the Guapiruvu Neighbourhood)	Brazil
York University	GIC Visel and GIC Proam (Groups of Common Initiatives)	Cameroon
York University	Black Creek Community Farm	Canada
York University	Development and Peace, Sacred Heart Church of the First Peoples	Canada
York University	Comunidad Mon Fen de Yaldad - Quellón	Chile
York University	Artisanal Fishers of Dalcahue	Chile
York University	Artisanal Fishers of Maullín	Chile
York University	Corporación de Mujeres Entre Mar y Tierra	Chile
York University	Asociación de Comunidades Mapuche Huilliche de Carelmapu	Chile
York University	Red por la Defensa del Rio Queuco	Chile
York University	Rios to Rivers	Chile
York University	Malen Leubü	Chile
York University	Climate Justice International	Kenya
York University	União Nacional de Componeses (UNAC)	Mozambique
York University	AlternaCtiva (Acção pela Emancipação Social)	Mozambique
York University	ObservA (Observatório Ambiental para Mudanças Climáticas)	Mozambique
York University	Justiça Ambiental (JA)	Mozambique
York University	Odemuyiwa Famers' Association	Nigeria
York University	Agbeloba / Ilora Smallholder Farmers Cooperative	Nigeria
York University	Vaal Environmental Justice Alliance	South Africa
York University	Association for Water and Rural Development	South Africa
York University	Groundwork	South Africa

ANNEX 6

RESEARCH PLACEMENT PARTNERS BY COUNTRY

Country	Research Placement Partner	Canadian University
Bangladesh	Water & Sanitation for the Urban Poor	University of Waterloo
Bangladesh	Centre for the Rehabilitation of the Paralysed (CRP)	Queen's University
Bhutan	Bhutan's Office of Consumer Protection	University of Victoria
Bhutan	Bhutan National Legal Institute	University of Victoria
Botswana	Botswana International University of Science and Technology	University of Regina
Brazil	Municipal Agency of the Environment and Urban Planning	University of Waterloo
Brazil	Forum of Traditional Communities in Angra dos Réis	York University
Brazil	Associação dos Bananicultores e Produtores Rurais da Comunidades Tradicionais do Sertão do Ubatumirim (ABU)	York University
Brazil	Observatório de territórios sustentáveis e saudáveis da Bocaína (OTSS)	York University
Brazil	MOVSAM (Movimento pelas Serras e Águas de Minas Gerais)	York University
Brazil	EduMite (Grupo de pesquisa Educação, Mineração e Território)	York University
Brazil	Prato Verde Sustentável	York University
Brazil	AMOCQ (Associação dos Moradores do Quilombo do Campinho da Independência)	York University
Brazil	ARQUISABRA (Associação de Remanescentes do Quilombo Santa Rita do Bracuí)	York University
Brazil	CONTAG (National Confederation of Rural Workers)	York University
Brazil	AGUA (Association of Solidarity Economy and Sustainable Development of the Guapuruvu Neighbourhood)	York University
Cambodia	Raoul Wallenberg Institute (RWI)	University of Victoria
Cambodia	American Centre for International Labour Solidarity	University of Victoria
Cameroon	Organisation Action pour la biodiversité et la gestion des terroirs	Université de Moncton
Cameroon	GIC Visel and GIC Proam (Groups of Common Initiatives)	York University
Canada	Ottawa Biosphere Eco-City (OBEC)	Carleton University
Canada	Clarissa Brocklehurst	Carleton University
Canada	Ecology Ottawa	Carleton University
Canada	Tucker House	Carleton University
Canada	Water Aid	Carleton University
Canada	CELADA	Carleton University



Country	Research Placement Partner	Canadian University
Canada	Agriculture and Agri Food Canada	Lakehead University
Canada	Global Open Data for Agriculture and Nutrition (GODAN)	McGill University
Canada	Siemens Canada	University of New Brunswick
Canada	CODE Canada	University of Ottawa
Canada	CARE Canada	University of Ottawa
Canada	Partnership for Economic Policy (PEP)	University of Ottawa
Canada	Feminist Alliance for International Action (FAIFA)	University of Ottawa
Canada	International Telecommunication Union (ITU)	University of Ottawa
Canada	Trade Facilitation Office (TFO) Canada	University of Ottawa
Canada	AI for Good Foundation	University of Ottawa
Canada	EPCOR	University of Regina
Canada	Canadian Research Institute for the Advancement of Women (CRIAOW)	University of Regina
Canada	New World Orange Biofuel	University of Regina
Canada	Center of Fuels and Energy from Biomass	University of Regina
Canada	Amnesty International	University of Regina
Canada	Royal Saskatchewan Museum	University of Regina
Canada	Ochapowace First Nation	University of Regina
Canada	International CCS Knowledge Centre	University of Regina
Canada	Husky Energy	University of Regina
Canada	PARC - Tree-ring Lab	University of Regina
Canada	Morning Star Lodge	University of Saskatchewan
Canada	Saskatoon Community Foundation	University of Saskatchewan
Canada	Saskatoon Food Bank and Learning Centre	University of Saskatchewan
Canada	Street Culture Project	University of Saskatchewan
Canada	North Central Family Center and The Regina Food Bank	University of Saskatchewan
Canada	Wheel Mobile Medical Clinic	University of Saskatchewan
Canada	Province of British Columbia, Ministry of Attorney General, Policy and Legislation Division	University of Victoria
Canada	Environmental Law Centre	University of Victoria
Canada	Peacemakers Trust	University of Victoria
Canada	Lampion Pacific Law Corporation	University of Victoria
Canada	Toronto Food Policy Council	Wilfrid Laurier University
Canada	Mennonite Economic Development Associates (MEDA)	Wilfrid Laurier University
Canada	Black Creek Community Farm	York University

Country	Research Placement Partner	Canadian University
Canada	Development and Peace, Sacred Heart Church of the First Peoples	York University
Canada	Agriculture and Agri-Food Canada	Carleton University
Canada	Cisco Industrial Research (Internet of Things)	Carleton University
Canada	African Journal of Management	Carleton University
Canada	Centre for Quantitative Analysis and Decision Support	Carleton University
Canada	National Resources Canada	Carleton University
Canada	PCS Biofuels	Carleton University
Canada	BW Global	Carleton University
Canada	Canada Africa Agriculture Summit	Carleton University
Canada	Carleton Climate Commons Working Group (CCC)	Carleton University
Canada	Carleton Sustainable Energy Research Centre - International Sustainable Transitions Conference	Carleton University
Canada	Logan Cochrane	Carleton University
Canada	Thunder Bay District Health Unit	Lakehead University
Canada	Millar Western Forest Products	Lakehead University
Canada	Hughes Winery	Lakehead University
Canada	Creekshore Farms	Lakehead University
Canada	KBM Resources	Lakehead University
Canada	Friends of the Finnish Labour Temple	Lakehead University
Canada	Vox Popular	Lakehead University
Canada	Thunder Bay Agriculture Research Association	Lakehead University
Canada	Matawa First Nations	Lakehead University
Canada	Développement International Desjardins	McGill University
Canada	KEYS job centre	Queen's University
Canada	KFL&A Public Health Unit	Queen's University
Canada	Street Health Centre	Queen's University
Canada	Institute of Clinical and Evaluative Sciences	Queen's University
Canada	Point 3 Biotech Corp.	Simon Fraser University
Canada	Terrella Energy Systems	Simon Fraser University
Canada	Core Energy Recovery Solutions	Simon Fraser University
Canada	Delta Q Technologies	Simon Fraser University
Canada	Fraser Basin Council (FBC)	Simon Fraser University
Canada	Canadian Coalition for Global Health Research	Université de Montréal
Canada	Alberta Health Services	University of Calgary



Country	Research Placement Partner	Canadian University
Canada	Planet Hatch	University of New Brunswick
Canada	Samuelson-Glushko Canadian Internet Policy and Public Interest Clinic (CIPPIC)	University of Ottawa
Canada	Bioeconomy Lab	University of Ottawa
Canada	International Institute for Sustainable Development (IISD)	University of Ottawa
Canada	Centre for Global Health Research	University Of Toronto
Canada	Canadian Alliance for Global Health	University of Waterloo
Canada	United Nations University – Inst. For Water, Environment and Health	University of Waterloo
Canada	Centre for International Governance Innovation (CIGI)	Wilfrid Laurier University
Chile	Comunidad Mon Fen de Yaldad - Quellón	York University
Chile	Artisanal Fishers of Dalcahue	York University
Chile	Artisanal Fishers of Maullín	York University
Chile	Corporación de Mujeres Entre Mar y Tierra	York University
Chile	Asociación de Comunidades Mapuche Huilliche de Carelmapu	York University
Chile	Red por la Defensa del Río Queuco	York University
Chile	Rios to Rivers	York University
Chile	Malen Leubü	York University
China	World Wildlife Fund	University of Waterloo
China	Nanjing Planck Organic Food Company	Wilfrid Laurier University
China	Chinese Research Academy of Environmental Science	University of Waterloo
Colombia	Centro de pensamiento de Cartagena de Indias y Bolívar (Center of thought of Cartagena and Bolívar)	Ryerson University
Colombia	Establecimiento publico Ambiental de Cartagena (EPA)	Ryerson University
Colombia	World Bank (Bogota office)	University Of Toronto
Colombia	Observatorio del Caribe (Colombian Caribbean Observatory)	Ryerson University
Democratic Republic of the Congo	Heal Africa Hospital	Queen's University
Democratic Republic of the Congo	Institut pour l'étude et la recherche agronomique de Luki	Université de Moncton
Ecuador	EkoRural	Lakehead University
Ethiopia	International Water Management Institute	University of Calgary
Ethiopia	Eastern Nile Technical Regional Office	University of Calgary
Ethiopia	African Trade Policy Centre	University of Ottawa
Ghana	Farm Radio International (FRI)	Carleton University
Ghana	African Institute for Mathematical Sciences (AIMS)	Carleton University
Ghana	VIAMO Ghana	McGill University

Country	Research Placement Partner	Canadian University
Ghana	Densu Associates	McGill University
Ghana	Sinapi Aba Savings and Loans	McGill University
Ghana	Special Learning Materials Limited	McGill University
Ghana	Leti Arts	McGill University
Ghana	Legendary Foods Africa (previously ASPIRE)	McGill University
Ghana	Grameen Foundation	McGill University
Ghana	Olinga Foundation	McGill University
Ghana	Tamale Teaching Hospital	University of Alberta
Ghana	Ghana Health Service – Research Division	University of Alberta
Ghana	The Ngleshie Amanfro Polyclinic	University of Alberta
Ghana	Ga South Municipal Hospital	University of Alberta
Ghana	Manna Mission Hospital	University of Alberta
Ghana	Old Ningo Health Centre	University of Alberta
Ghana	Koforidua Regional Hospital/ Eastern Regional Hospital	University of Alberta
Ghana	University of Ghana Hospital Limited (Legon Hospital)	University of Alberta
Ghana	The King's Academy	University of Alberta
Ghana	Princess Marie Louise Children's Hospital	University of Alberta
Ghana	Mercy Women's Hospital, Fistula Centre,	University of Alberta
Ghana	37 Military Hospital Antenatal Unit	University of Alberta
Ghana	37 Military Hospital, Metabolic Unit	University of Alberta
Ghana	Lekma Hospital Teshie-Nungua	University of Alberta
Ghana	Korle Bu Teaching Hospital	University of Alberta
Ghana	La Dadekotopon municipal Education Office	University of Alberta
Ghana	Shai-Osudoku District Hospital (SODH)	University of Alberta
Ghana	The Street Academy	University of Alberta
Ghana	The Street Academy, Sexual Reproductive Health	University of Alberta
Ghana	Korle-Bu Teaching Hospital, Legon hospital, La General hospital	University of Alberta
Ghana	Street Children Empowerment Foundation	University of Alberta
Ghana	Eternal Brains Consult	University of Calgary
Ghana	United Youth Initiative Africa	University of Regina
Ghana	World Vision/Vision Fund Ghana	McGill University
Ghana	World Vision Ghana/Mother Food International	McGill University
Ghana	Ministry of Food and Agriculture/Women in Agriculture Development	McGill University
Ghana	IFPRI_Ghana	McGill University



Country	Research Placement Partner	Canadian University
Guatemala	Centro de Salud de Chichicastenango [Chichicastenango Health Centre]	University of Saskatchewan
Guatemala	Redmisar a nivel Departamental de totonicapán y ALIANMISAR a nivel nacional	University of Saskatchewan
Guatemala	Secretariat of Food and Nutritional Security (SESAN)	University of Saskatchewan
India	Neerman	University of Waterloo
India	Youth Yeahmovement	Wilfrid Laurier University
Iran	Research Centre for Environment and Sustainable Development	University of Waterloo
Kenya	Kazuri	University of Ottawa
Kenya	Climate Justice International	York University
Kenya	African Centre for Technology studies (ACTS)	University of Ottawa
Kenya	COHESU	University of Waterloo
Liberia	Accountability Lab	University of Ottawa
Madagascar	Isalo National Parks	University of Regina
Malawi	Find Your Feet - Malawi	Carleton University
Malawi	Vwaza Marsh Wildlife Reserve	Carleton University
Malawi	Grand Palace Hotel	Carleton University
Malawi	Directorate of Agriculture, Environment and Natural Resources	Carleton University
Malawi	Soils Food and Healthy Communities Project (SFHC)	Carleton University
Malawi	Thomson Consult	University of New Brunswick
Malawi	Church and Society Programme, CCAP Livingstonia Synod i	Wilfrid Laurier University
Malawi	Foundation for Children's Rights	Wilfrid Laurier University
Mozambique	União Nacional de Composeses (UNAC)	York University
Mozambique	AlternaCtiva (Acção pela Emancipação Social)	York University
Mozambique	ObservA (Observatório Ambiental para Mudanças Climáticas)	York University
Mozambique	Justiça Ambiental (JA)	York University
Namibia	Statistics Namibia	Wilfrid Laurier University
Nigeria	KilSah Consulting	University of Ottawa
Nigeria	Odemuyiwa Famers' Association	York University
Nigeria	Agbeloba / Ilora Smallholder Farmers Cooperative	York University
Pakistan	Aga Khan Hospital For Women and Children	University of Calgary
Pakistan	Koohi Goth Hospital	University of Calgary
Pakistan	UNDP GEF Small Grants Program	University of Waterloo
Peru	Instituto Científico del Agua	University of Calgary
Philippines	Asian Development Bank	University Of Toronto
Rwanda	Quantum Leap Africa	University of Calgary

Country	Research Placement Partner	Canadian University
Senegal	Région médicale de Matam	Université de Moncton
Senegal	Région médicale de Kolda	Université de Moncton
Senegal	Ministère de l'éducation nationale / Division contrôle médicale	Université de Moncton
Senegal	Transform Nutrition West Africa/IFPRI Senegal	McGill University
South Africa	OUT	Carleton University
South Africa	INGENIO	University of Ottawa
South Africa	Hillcrest Aids Centre Trust	University of Ottawa
South Africa	Al-Mahsoud Foundation	University of Ottawa
South Africa	BioCiTi Lab & Incubator	University of Ottawa
South Africa	International Water Management Institute	University of Waterloo
South Africa	UNHCR	Wilfrid Laurier University
South Africa	Western Cape Government	Wilfrid Laurier University
South Africa	Vaal Environmental Justice Alliance	York University
South Africa	Association for Water and Rural Development	York University
South Africa	Groundwork	York University
South Africa	South African Roadies Association	University of Ottawa
Tanzania	The Tanzania Association of the Deaf (TAD)	Carleton University
Tanzania	Bugando Medical Centre	University of Calgary
Tanzania	Geita Regional Referral Hospital	University of Calgary
Tanzania	East African Women in Business Platform (EAWiBP)	University of Ottawa
Tanzania	Green Hope Organisation	University of Saskatchewan
Tanzania	Tanzania Education and Micro Business Opportunity (TEMBO)	Carleton University
Thailand	ENLAWTHAI Foundation (EnLAW)	University of Victoria
Thailand	Health Information Systems Working Group	Queen's University
Uganda	Save the Mothers East Africa	University of Waterloo
Uganda	Reach One Touch One Ministries	University of Waterloo
Vietnam	Institute of Legal Science (ILS), under Ministry of Justice of Vietnam	University of Victoria
Zambia	Choma Museum and Craft Centre	University of Ottawa
Zambia	Western Province Health Office	University of Waterloo



ANNEX 7

PARTICIPATING CANADIAN UNIVERSITIES

University	Province	Project Title
Carleton University	Ontario	Societal Transformation and Climate Change: Training the next generation of scholars in Sub-Sahara Africa (NextGen Climate Change Advanced Scholars)
Lakehead University	Ontario	Agrobiodiversity, Nutrition and Sustainable Marketing of Heritage Crops in Ecuador and Canada
McGill University	Quebec	A network of interdisciplinary, solution-oriented researchers to improve the livelihoods and food and nutrition security of adolescent girls and women farmers in rural Ghana
Queen's University	Ontario	QE Scholars Network for Equity in Maternal and Child Health
Ryerson University	Ontario	Strengthening Coastal Aquifer Resilience and Groundwater Use Against Climate Change Effects in the Caribbean
Simon Fraser University	British Columbia	Providing Sustainable Potable Water and Greenhouse Crops
Université de Moncton	New Brunswick	Développement des "leaders" pour une meilleure nutrition des filles et des femmes, un incontournable pour le mieux-être des populations d'Afrique de l'Ouest et Centrale
Université de Montréal	Quebec	Bourses de recherche destinées aux chercheurs doctoraux, post-doctoraux et en début carrière du Canada et de Chine dans les domaines du droit et de la santé
Université du Québec en Outaouais	Quebec	Partenariat pour l'amélioration de la santé maternelle et infantile en Afrique de l'Ouest à l'aide de la santé numérique
University of Alberta	Alberta	Coming Together – Strengthening Partnerships between Ghana and Canada to Address Maternal, Newborn, and Child Health
University of Calgary	Alberta	QES-Advanced Scholars (International Development)
University of New Brunswick	New Brunswick	Entrepreneurship Education and Training for Canada, India, China and Ghana
University of Ottawa	Ontario	The Open African Innovation Research Partnership (Open AIR): New and Emerging Researcher Fellowship Program
University of Regina	Saskatchewan	University of Regina Queen Elizabeth II Diamond Jubilee Program for Advanced Scholars: Innovative Approaches to Climate Change

University	Province	Project Title
University of Saskatchewan	Saskatchewan	Global Leaders Scholarship – Seeking Sustainable Solutions in Food Security and Nutrition for Women and Children: A Tri-Country Approach
University of Toronto	Ontario	The Statistical Alliance for Vital Events (SAVE) Queen Elizabeth Scholarship-Advanced Scholars Program (SAVE-QES)
University of Victoria	British Columbia	Regulating Globalization in South and Southeast Asia
University of Waterloo	Ontario	Water Security as a Foundation for Healthy Communities and Sustainable Livelihoods
University of Winnipeg	Manitoba	The University of Winnipeg Queen Elizabeth II Diamond Jubilee International Scholars Program
Wilfrid Laurier University	Ontario	Building Capacity in Urban Food System Governance in LMIC Cities

QUEEN ELIZABETH *Scholars*



Dr. Mehrab Mehrab, second from right, Project Lead at Ryerson University and his Colombian counterpart Dr. Edgar Quinones, centre, with QES-AS funded researchers at the University of Cartagena.